

Tameside Co-production Charter and Development Plan



Introduction

Started in January 2025 and updated after the SEND local area inspection, this aspirational co-production charter was developed during a period of significant challenge within Tameside's SEND landscape. It aims to foster a change in the culture of working within the Local Area Partnership (LAP), encouraging greater collaboration and shared responsibility.

The charter serves as a unifying framework for all stakeholders, promoting partnership working to meet the educational, health, and social needs of children and young people with SEND. Together, our shared goal is to support, enable and work alongside our children, young people, and their families at every stage of their journey, preparing them for a successful transition into adulthood.



How this Charter Links to the Wider Strategic Work of the LAP

The SEND Local Area Improvement Board (SLAIB) has identified seven strategic priorities within its SEND strategy alongside 3 Priority Actions. These priorities will guide the partnership's work over the next three years, aligning with the timeframe of this charter:

Priority Action Plan Areas for Development

Priority Action 1 - As a Partnership, we will urgently strengthen our joint strategic approach by ensuring clear governance, aligned commissioning, and effective implementation and monitoring. This will enable us to deliver better outcomes for children and young people with additional needs.

Priority Action 2 - We will improve our systems and processes for information sharing across education, health, and care. By embedding effective joint working, we will support professionals to collaborate more effectively and improve the experiences of children and young people.

We will also implement and monitor the effectiveness of these improvements through shared performance measures, regular multi-agency reviews, and feedback from professionals and families to ensure sustained impact.

Priority Action 3 As a Partnership, we will take decisive action to reduce delays and close gaps in service provision across key pathways, including neurodevelopmental support.



Priority 1 Enabling Inclusion in Education

Strengthening inclusive practices across all educational settings to ensure children and young people with SEND are fully supported to access high-quality, mainstream education wherever appropriate.

Priority 2 Pathways to Adulthood

Developing clear, coordinated pathways that support young people with SEND in preparing for adulthood, including employment, independent living, community participation, and good health.

Priority 3 Workforce and Infrastructure

Building a confident, skilled, and well-supported workforce across education, health, and care sectors to meet the diverse needs of children and young people with SEND.

Priority 4 Local Statutory Framework

Ensuring compliance with statutory responsibilities and improving the consistency, timeliness, and quality of Education, Health and Care (EHC) processes and decision-making.

Priority 5 Local Inclusion Partnership

Strengthening collaborative working across the local area through a robust partnership model that includes schools, settings, services, families, and young people.

Priority 6 Role of the Independent Sector

Clarifying and enhancing the role of independent providers within the local SEND system to ensure quality, value for money, and alignment with inclusive principles.

Priority 7 Integrated Health Systems

Creating a more integrated and responsive health system that meets the needs of children and young people with SEND, with equitable access to services and timely interventions.

While this charter directly contributes to co-production which is an overarching theme within the improvement plan with all work on the other priorities will be carried out in the spirit of co-production as outlined in this charter.



The Tameside Definition of Co-production

In Tameside, co-production is a commitment to inclusion and collaboration, placing the voices of children, young people, and families at the heart of all that we do. Guided by consistent principles, it adapts to diverse needs while ensuring strategic alignment across policy and practice that supports those with SEND.

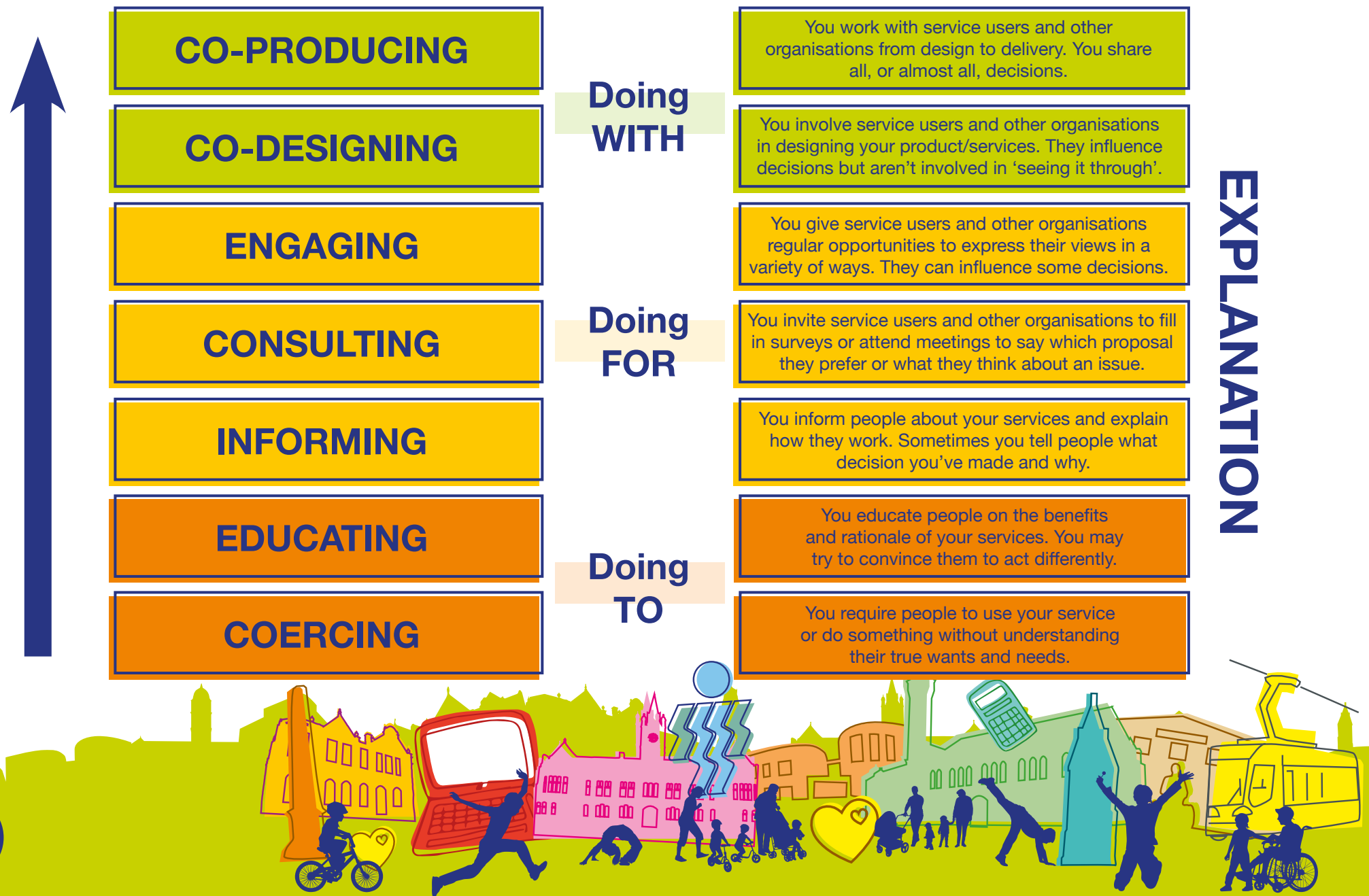
Transparent communication fosters trust, with accessible information and active engagement demonstrating impact through “You Said, We Are Doing.”

Honesty underpins the approach, with clear boundaries on achievable goals and decisions shaped by lived experiences. Strong connections between education, health, social care, parents, carers and the voluntary sector create a cohesive framework, ensuring no voice is left unheard. Tameside’s co-production evolves through continuous feedback, driving meaningful and lasting change.

In Tameside, we intend that co-production is more than a process; it is a commitment to inclusion, equity, and shared ownership, ensuring that the voices of children, young people, and families are central in shaping meaningful and effective outcomes.



The Coproduction ladder



What is the Tameside Coproduction Charter, and how was it developed?

The Tameside Co-production Charter, shown below, was developed during the autumn of 2024 by collaborating with various SEND stakeholders, including parents, carers, and families. This work was completed following two workshops funded by the Department for Education (DfE) and facilitated by the RISE Partnership and the Council for Disabled Children (CDC).

The charter was created through discussions in these sessions and subsequent engagement activities. It represents the aspiration shared by all stakeholders for us to work together in Tameside.

We place children and families at the heart of everything we do in Tameside.

We are dedicated to having the right people in the right place at the right time to drive our strategic priorities forward.

We are a cohesive and collaborative partnership.

We value and respect the expertise of everyone—children, young people, parents, carers, and professionals alike.

THE TAMESIDE 4 C's of Coproduction

We Are Consistent

We Communicate

**We Are Clear,
Transparent, and
Honest**

We are Connected



We Are Consistent

- We are approachable and always available.
- Our approach is consistent while remaining adaptable to diverse needs.
- Co-production is at the core of everything we do.
- We ensure all stakeholders understand the principles of co-production.
- Our strategies and approaches are clearly aligned, providing consistency across all areas.
- We continuously learn from our experiences, adapting and improving while maintaining a consistent approach.
- Regular reflection and review help us remain consistent while staying relevant.

We Communicate

- Our communication ensures that children's and young people's voices are central and heard throughout the process.
- We actively listen and demonstrate impact through "You Said, We Are Doing."
- We ensure communication is accessible, and information is easy to locate.
- We clearly define how communication will take place, including timelines.
- We emphasise co-production in communication, ensuring the voices of children, parents, and carers are equally valued and represented.
- We actively involve children, young people, and families to ensure they fully understand and engage in decisions affecting them. Through meaningful co-production, they are central to shaping their support on a personal level and contributing to strategic planning at the local area level. This dual approach ensures that individual needs are met effectively while their lived experiences inform and enhance the design and delivery of provision across the wider community.
- We provide transparent, inclusive communication highlighting connections to other strategies, including SEND-specific and broader approaches.
- We create accessible plans and processes to deliver our principles effectively.
- Information is shared openly and promptly, ensuring everyone knows what to expect and when.



We Are Clear, Transparent, and Honest

- We are upfront about the scope of what can be achieved and acknowledge the challenge and limitations within our work.
- We take responsibility for delivering on our commitments.
- We work collaboratively to ensure no one feels isolated or unsupported.
- We are upfront about the scope of what can be achieved, acknowledging challenges and limitations.
- Transparency is maintained by explaining our processes, decisions, and the pace of implementation.
- We aim to ensure families' and children's stories are remembered and inform our actions, focusing on long-term solutions.
- Our approach reflects ongoing learning and incorporates feedback to remain clear and honest in our delivery.

We are Connected

- We actively involve parents, carers, children, and young people in decisions about their support and strategic planning. Through co-production and partnerships across education, health, social care, and the voluntary sector, we ensure individual needs are met and lived experiences shape wider provision.
- We actively share information and resources to achieve common goals.
- We build networks that connect children, young people, families, and professionals.
- We create opportunities for continuous engagement and feedback from all stakeholders.
- We actively link services across education, health, and social care to create a cohesive framework, which is underpinned by the SEND Youth Council.
- We involve parents, carers, children, and young people in decisions and the development of principles, strategies, and plans for services. All stakeholders, including families, professionals, and the voluntary sector, collaborate to meet needs and shape provision through co-production.
- We prioritise collaboration to ensure seamless connections between services, processes, and people.
- Our partnerships foster a sense of inclusion and ensure no voices are left unheard.
- We focus on continuous learning, regularly reviewing our connections to adapt to emerging needs and challenges.



Indicators of True Co-Production in Tameside

We will know that co-production is truly happening in Tameside when everyone involved can confidently say:

“ I can engage meaningfully in meetings and events. ”

“ My views and experiences are truly represented. ”

“ I am an equal partner in the local area. ”

“ I actively participate at every stage, from beginning to end, where appropriate. ”

“ I am open to considering new approaches and working differently to achieve the best outcomes. ”

“ I have a say in setting priorities for co-production projects to drive meaningful change. ”

“ My contributions are valued and recognised. ”

“ I receive clear, timely, and accessible information in a way that works for me. ”

“ I am supported to actively and meaningfully participate in or facilitate co-production activities ”



Actions to Ensure Effective Co-Production

To ensure effective co-production is taking place, we will:

- Regularly review how well co-production is embedded by assessing our practices against co-production quality indicators as part of our annual self-evaluation.
- Measure the impact of our co-production efforts to ensure meaningful outcomes.
- Continuously challenge ourselves to learn, improve, and celebrate successes, recognising positive contributions and progress.

Documents this charter should be read in conjunction with

- SEND Strategy
- SEND Joint Commissioning Strategy
- Tameside Council Engagement Strategy
- SLAIB Terms of Reference



Our teams have all contributed to developing the Tameside SEND Strategy and Improvement Plan and are committed to working collaboratively to achieve its goals:

Emma Alexander
CEO Tameside Council

Councillor Theresa Smith
**Executive Member for
Children's and Families**

Sue Johnson
Tameside SEND Local Area
Improvement Partnership
Independent Chair

Councillor Leanne Feeley
**Executive Member for Lifelong
Learning and Culture**

Jill Colbert
**Director of Children's Services
(Tameside)**

Steph Sloan
Deputy Place-Based Lead GM
NHS (Tameside) Executive Director
Tameside & Glossop NHS Integrated
Care Foundation Trust (ICFT)

Tameside Umbrella Parent Carer Forum

OKE Parent Carer Forum

Representatives from the Schools Groups:

Primary
Secondary
Special
Post 16



Tameside Coproduction Development Plan

Through the coproduction workshops, we identified the five outcomes below as priorities for our coproduction efforts. Each outcome will be assigned to a group of volunteers who will collaboratively coproduce an action plan and develop the corresponding workstreams.

| Outcome | Steps to Achieve Outcom | Timescale | What difference will this make for CYP and families in Tameside | Link to SEND improvement plan |
|---|---|-------------------|--|---|
| Families feel engaged and supported equitably, ensuring their voices are valued and reflected in decision-making processes. This is achieved through a Co-Production charter that guides collaborative efforts and ensures transparency, inclusivity, and fairness in all interactions. | <p>Draft the Charter Collaboratively through the workshops through RISE</p> <p>Review and Refine</p> <ul style="list-style-type: none"> Share the draft charter with stakeholders for feedback. Make adjustments based on input to ensure the charter accurately reflects the collective voice. <p>Gain Formal Agreement</p> <ul style="list-style-type: none"> Secure commitment from all stakeholders to uphold the charter. Include formal sign-off from relevant organisations, individuals, and governing bodies. <p>Launch the Charter</p> <ul style="list-style-type: none"> Publicly launch the co-production charter to raise awareness and reinforce the commitment to collaboration. Share the charter widely within the community and with relevant organisations. <p>Monitor, Evaluate, and Evolve</p> <ul style="list-style-type: none"> Regularly review the implementation of the charter to ensure its principles are upheld. Adapt the charter as needed to reflect changing needs, priorities, or feedback. | By September 2025 | <p>Stakeholder Feedback</p> <ul style="list-style-type: none"> Regular surveys or focus groups to assess families' perceptions of engagement, support, and inclusivity. Feedback from families on whether their voices are heard and reflected in decision-making. <p>Representation in Decision-Making</p> <ul style="list-style-type: none"> Increased participation of families in decision-making forums, workshops, and planning meetings. A record of co-production activities and the number of family representatives involved. <p>Implementation of the Co-Production Charter</p> <ul style="list-style-type: none"> Evidence that the principles of the Co-Production Charter are embedded in policies, plans, and practices. Tracking actions taken from family input to ensure their suggestions influence decisions. <p>Satisfaction Rates</p> <ul style="list-style-type: none"> Measured improvement in family satisfaction levels with support services through periodic evaluations. | Overarching thread throughout the new improvement plan. |

| Outcome | Steps to Achieve Outcome | Timescale | What difference will this make for CYP and families in Tameside | Link to SEND improvement plan |
|---|---|-------------------|---|----------------------------------|
| The Tameside SENDIASS service provides accessible, high-quality support and advice to families, empowering them to make informed decisions and effectively navigate the SEND system. | SENDIASS Co-Production Team to be established | By April 2026 | <p>The Tameside SENDIASS service will deliver accessible, impartial, and high-quality information, advice, and support to children and young people with SEND and their families. Grounded in co-production, the service will be shaped by the voices and lived experiences of families, ensuring that support will remain relevant, respectful, and responsive to local needs.</p> <p>Through early intervention and tailored guidance—co-designed with parent carers and young people—the service will empower families to make informed decisions, confidently navigate the SEND system, and secure the right support at the right time. This collaborative approach will foster trust, strengthen relationships between families and services, and lead to improved outcomes in education, wellbeing, and inclusion.</p> <p>By embedding co-production at every level—from service design to delivery and evaluation—Tameside SENDIASS will ensure that families are not just recipients of support, but active partners in shaping a more inclusive and effective SEND system.</p> | SEND IMPROVEMENT PLAN Priority 5 |
| ISCAN therapies are delivered through collaborative working and co-produced therapy plans with families, ensuring that all advice is effectively incorporated into EHCPs to meet children's and young people's needs. | ISCAN Co-Production Team to be established | By September 2026 | <p>ISCAN therapies will be delivered through collaborative, multi-disciplinary working and co-produced therapy plans developed in partnership with families and young people. This approach will ensure that therapeutic advice is not only tailored and meaningful, but also effectively incorporated into Education, Health and Care Plans (EHCPs), enabling children and young people's needs to be fully understood and met.</p> <p>By embedding co-production at the heart of the therapeutic process, ISCAN will promote shared ownership, strengthen trust between families and professionals, and contribute to improved outcomes in communication, emotional wellbeing, and functional independence.</p> | SEND IMPROVEMENT PLAN Priority 7 |



| Outcome | Steps to Achieve Outcome | Timescale | What difference will this make for CYP and families in Tameside | Link to SEND improvement plan |
|--|--|-------------------|--|---|
| Families and professionals can easily navigate the Local Offer through a clear and accessible “Who’s Who” resource, ensuring they know who to contact for support and guidance within the SEND system. | Local Offer Co-Production Team to be established | By September 2026 | <p>Families and professionals will be able to easily navigate the Local Offer through a clear, accessible, and co-produced “Who’s Who” resource. Developed in partnership with parent carers, young people, and frontline practitioners, this tool will ensure that everyone knows who to contact for support, advice, and guidance within the SEND system.</p> <p>By demystifying roles and responsibilities, the resource will promote transparency, reduce confusion, and strengthen timely access to the right support. It will also support more effective collaboration between families and services, contributing to improved experiences and outcomes for children and young people with SEND.</p> | Completed through last SEND action plan with additional coproduction with parents to improve the efficacy of the information. |
| Young people are supported in their preparation for adulthood through aspirational conversations, clear engagement plans, and early involvement of transition workers. Stronger links with adult services ensure a seamless transition to independence, employment, community inclusion, and better health outcomes. | PFA Co-Production Team to be established | By September 2026 | <p>Young people will be supported in their preparation for adulthood through aspirational, person-centred conversations, co-produced engagement plans, and the early involvement of transition workers. These plans will reflect the young person’s voice, ambitions, and strengths, ensuring that support is meaningful and empowering.</p> <p>Stronger, more integrated links with adult services—including health, social care, education, and employment pathways—will ensure a seamless transition into adulthood. This joined-up approach will lead to improved outcomes in independence, employment, community inclusion, and long-term health and wellbeing.</p> <p>By embedding co-production throughout the transition journey, services will build trust, promote autonomy, and equip young people with the confidence and support they need to thrive in adult life.</p> | SEND IMPROVEMENT PLAN Priority 2 |



J008382

